



**Kerkstraat
5051 LA Goirle**

€ 1.975 p.m. ex.

Price	€ 1.975 p.m. ex.
Decoration	Partly furnished
Status	Rented
House type	Single family, terraced house
Build type	Existing
Year of construction	2022
Maintenance inside	Excellent
Maintenance outside	Excellent
Location	Near quiet road, in residential area, near forests
Living surface	133m ²
Livingroom surface	29m ²
Volume	560m ³
Rooms	5
Bedrooms	4
Bathrooms	1
Floors	3
Energy label	A+++
Garden	Backyard
Backyard	Southeast, 28m ²
Shed	Free standing, wood

Find a House does not accept any liability regarding the veracity of the presented information, nor can any rights be derived from it.

This spacious house is located in a beautiful location. An area of 133m², energy label A+++, 4 bedrooms and a sunny backyard.

Environment

The location is ideal; on the one hand, the house is conveniently located near the village center of Goirle with all its shopping facilities, terraces and restaurants and on the other hand you are bordered by nature. The house is also conveniently located for various roads, including the A58 towards Breda and Eindhoven and the A65 towards 's-Hertogenbosch.

Classification

Ground floor

Spacious entrance / hall with meter cupboard, toilet and which gives access to the living room. The living room has a lot of light through the large front at the rear.

The kitchen is slightly higher up, which gives it a playful effect. The kitchen is delivered with a complete kitchen corner unit with a hob, extractor hood, fridge freezer, combi oven and dishwasher.

First floor

You reach the first floor via a fixed staircase. Here are 2 bedrooms, one with walk-in wardrobe and a complete bathroom. The bedroom at the front is approximately 20m² with walk-in wardrobe and the bedroom at the rear is approximately 11m². The neat bathroom has a sink, bath, shower and a 2nd toilet.

Second floor

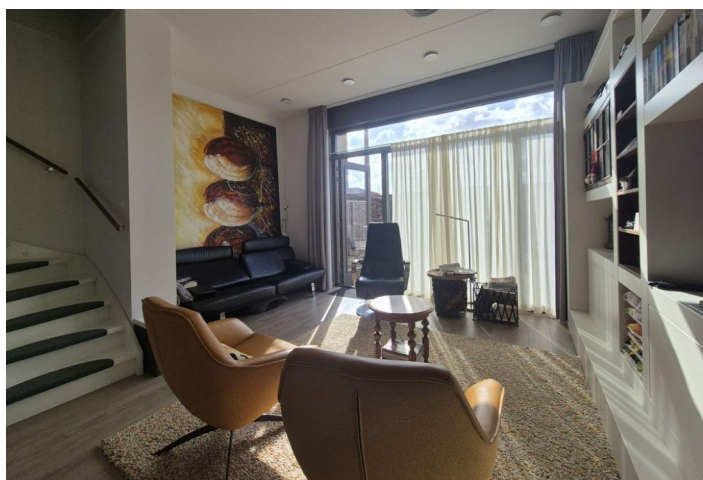
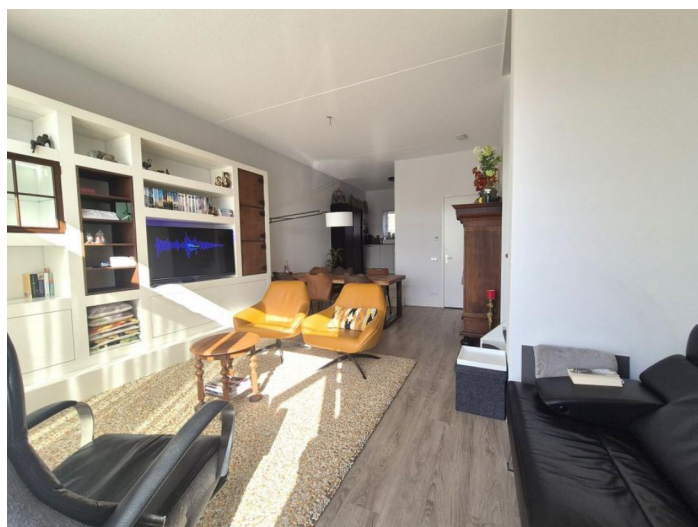
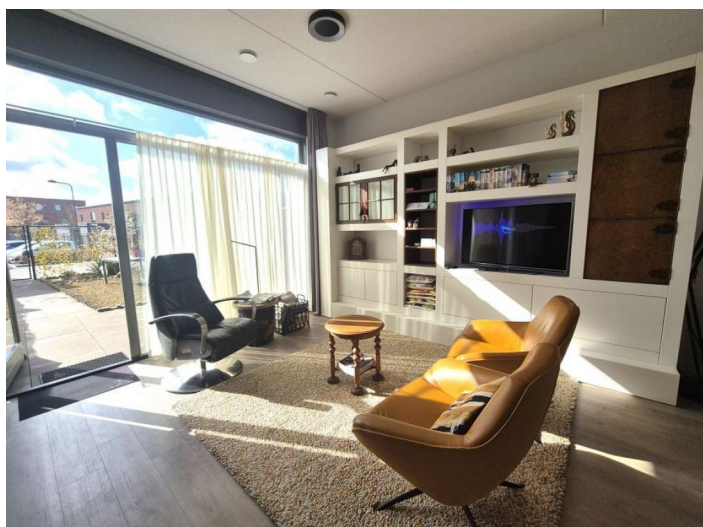
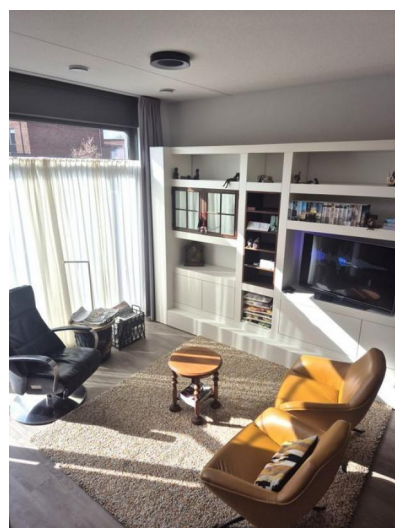
Landing to be reached via a staircase that gives access to two bedrooms (7 and 11m²) and a storage / laundry room. This is also where the technical equipment is located.

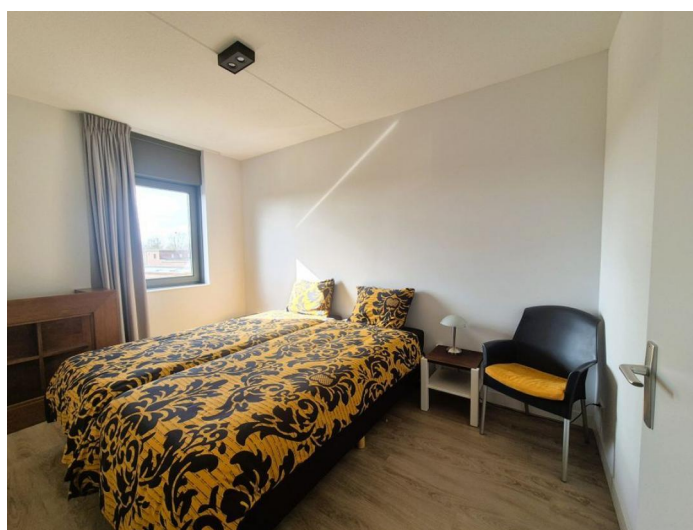
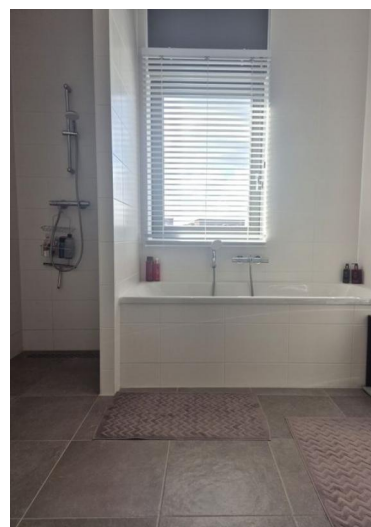
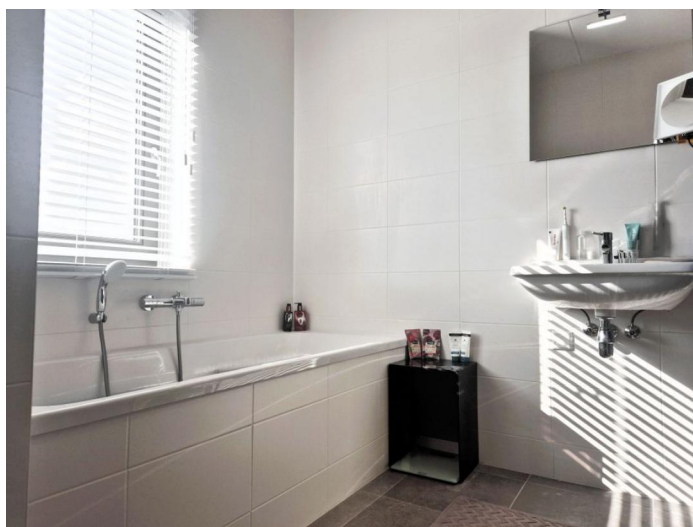
Garden

The backyard is located on the south east and has a wooden shed and a private parking space and a back entrance.

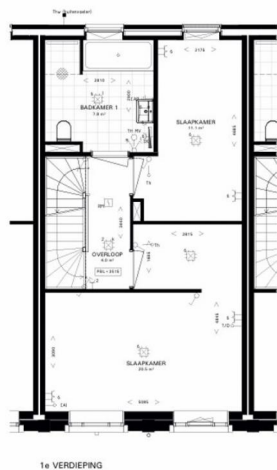
Details

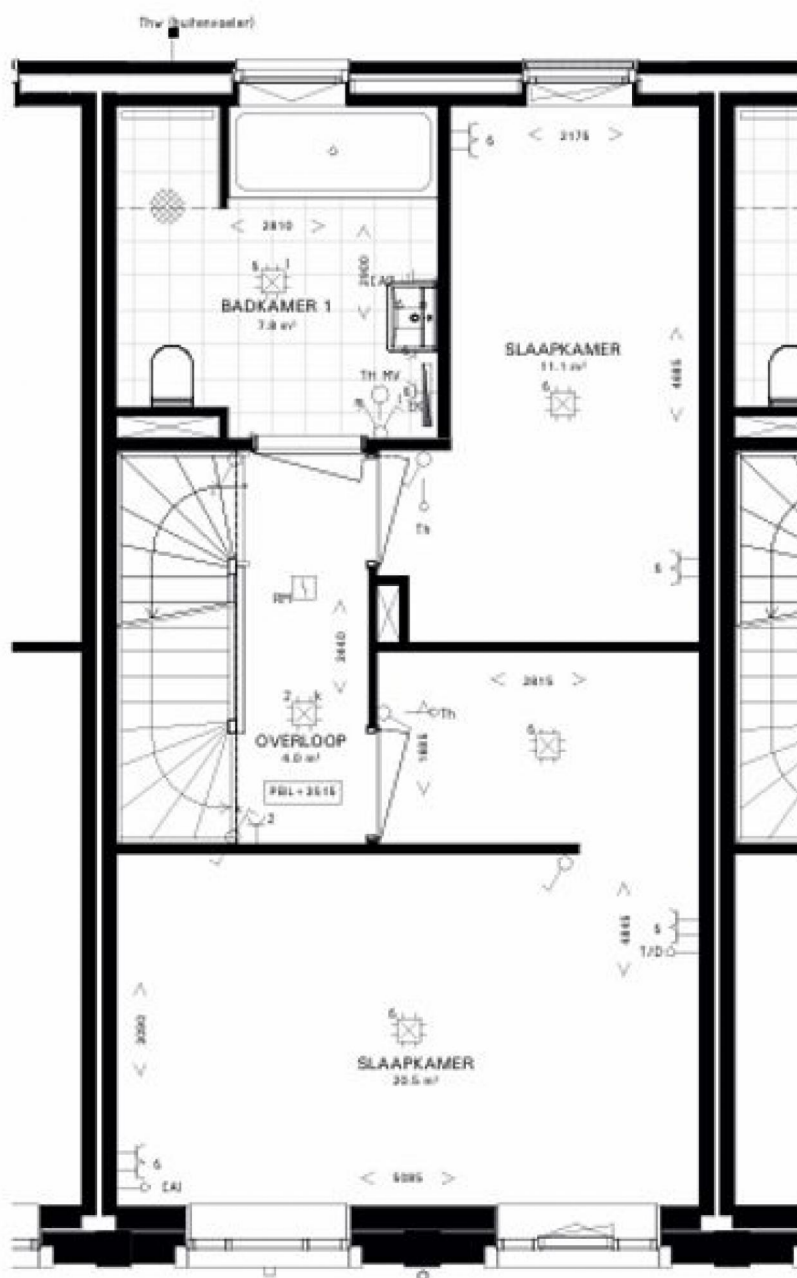
- The rent is € 1,975 per month, excluding utilities.
- Deposit is 2 months rent
- Income requirement at least 3 x the monthly rent.
- Pets are not allowed











1e VERDIEPING

1 : 50

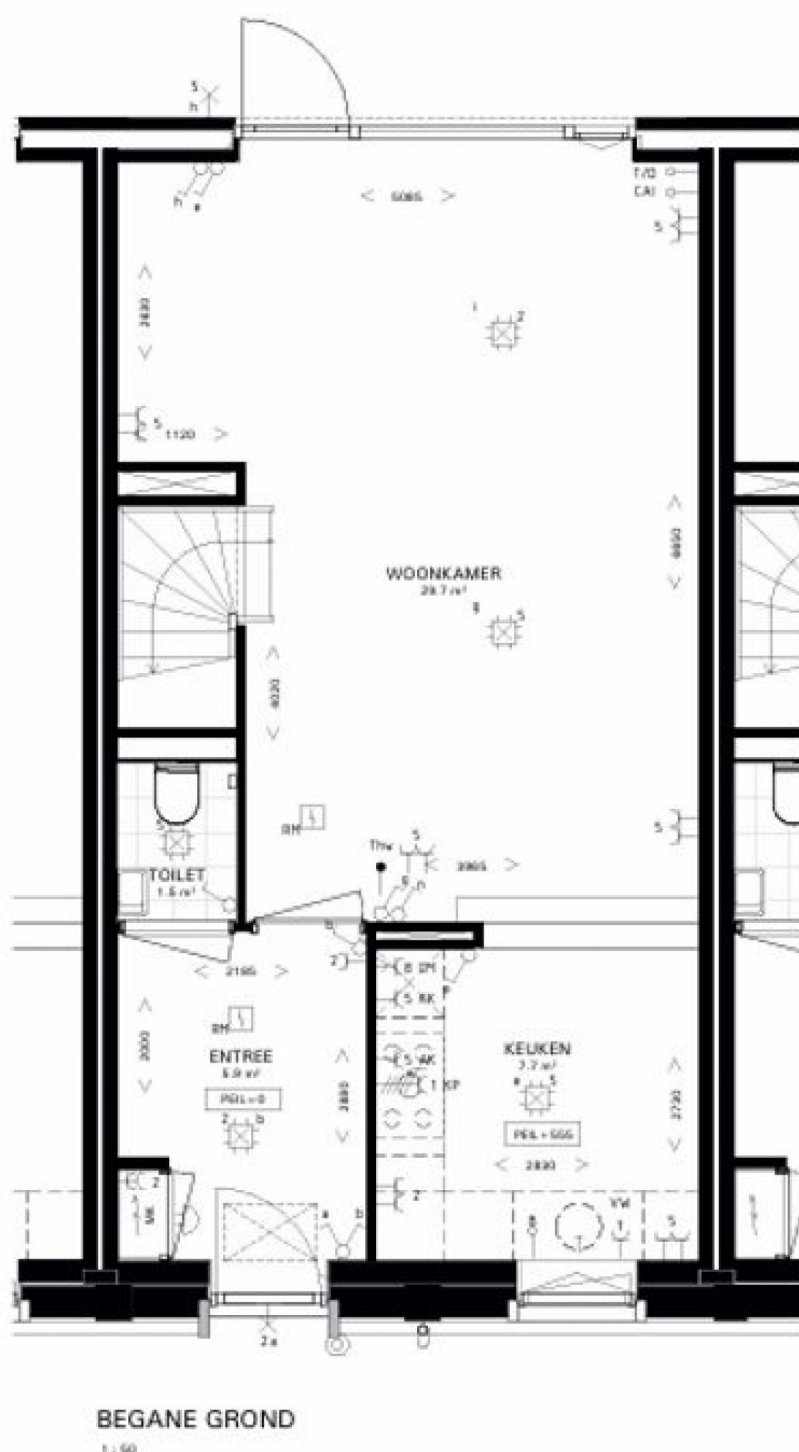
Find a House does not accept any liability regarding the veracity of the presented information, nor can any rights be derived from it.



2e VERDIEPING

1:10

Find a House does not accept any liability regarding the veracity of the presented information, nor can any rights be derived from it.



Find a House does not accept any liability regarding the veracity of the presented information, nor can any rights be derived from it.