



**Van der Steenhovenplein
3317 NM Dordrecht**

€ 1.750 p.m. ex.

Price	€ 1.750 p.m. ex.
Decoration	Partly furnished
Status	Rented
Acceptance	In consultation
House type	Single family, terraced house
Build type	Development
Year of construction	2022
Maintenance inside	Excellent
Maintenance outside	Excellent
Living surface	137m ²
Livingroom surface	40m ²
Rooms	5
Bedrooms	4
Bathrooms	1
Floors	2
Energy label	A++
Isolation	Fully isolated
Garden	Backyard, frontyard

Find a House does not accept any liability regarding the veracity of the presented information, nor can any rights be derived from it.

Quiet living on a short distance from larger cities such as Rotterdam and Breda, in a new house (2022) situated in the green? You can! Then choose Amstelwijck Park in Dordrecht.

Amstelwijck Park is being built near the city center and surrounded by greenery. A residential area where greenery embraces you and you experience the holiday feeling all year round. The houses are not only spacious, they are also very energy efficient. All homes receive an A+++ label and are energy neutral or even energy-producing. This provides more comfort and is good for your wallet.

Here you come home wonderfully!

Layout

Spacious entrance with meter cupboard, technical room and separate toilet provides access to the living room and the stairs to the first floor.

Spacious living room with modern open kitchen (approx. 40m²) with all necessary equipment, beautiful PVC floor, nice storage cupboard under the stairs, patio doors to the front garden and wicket door to the south-facing back garden.

First floor

The landing provides access to three bedrooms, a separate laundry room, the bathroom and the stairs to the second floor.

Bedroom I, approx. 16m² located at the front of the house

Bedroom II, approx. 15.6m² located at the rear of the house

Bedroom III, approx. 7.4m² located at the rear of the house

The bathroom is fitted with modern tiles and has a sink and a beautiful walk-in shower.

Second floor

On the top floor you will find a wonderful space of 27.5 m² that is ideal as a master bedroom, home office or a very spacious playroom for the children.

Particularities

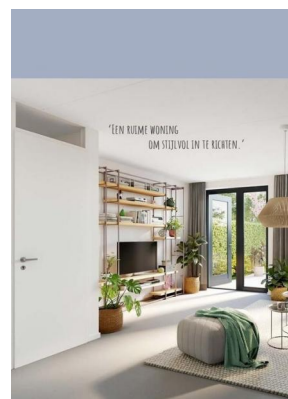
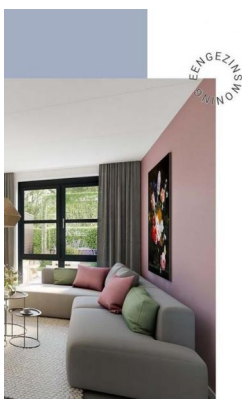
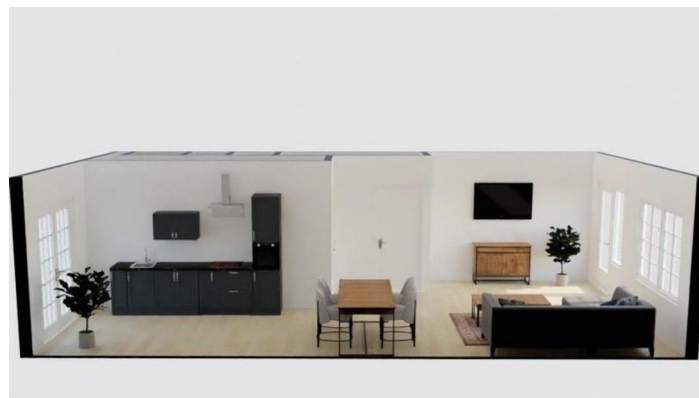
Car-free streets and wonderful living in the green, this is where you want to raise your children!

Offered fully upholstered

Delivery in consultation

Deposit €2000,-

Minimum rental period of 12 months



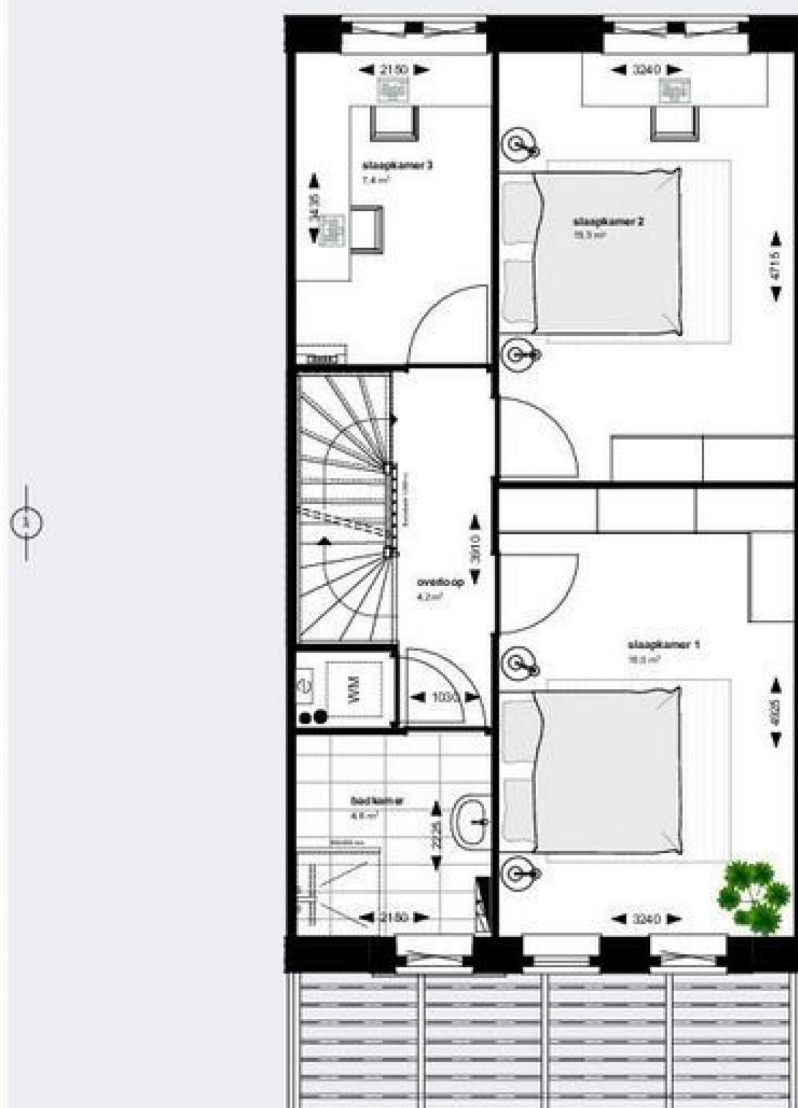
BEREIKBAARHEID

	<p>Wandeling Park Wandeling Wandeling</p>	<p>2 minuten 1 minuut 8 minuten 2 minuten</p>
	<p>Wandeling Wandeling Wandeling Wandeling Wandeling Wandeling Wandeling Wandeling Wandeling Wandeling</p>	<p>2 minuten 4 minuten 4 minuten 4 minuten 4 minuten 4 minuten 4 minuten 4 minuten 4 minuten 4 minuten</p>
	<p>Wandeling Wandeling Wandeling Wandeling Wandeling Wandeling Wandeling Wandeling Wandeling Wandeling</p>	<p>4 minuten 4 minuten 4 minuten 4 minuten 4 minuten 4 minuten 4 minuten 4 minuten 4 minuten 4 minuten</p>
	<p>Wandeling Wandeling Wandeling Wandeling Wandeling Wandeling Wandeling Wandeling Wandeling Wandeling</p>	<p>4 minuten 4 minuten 4 minuten 4 minuten 4 minuten 4 minuten 4 minuten 4 minuten 4 minuten 4 minuten</p>



Find a House does not accept any liability regarding the veracity of the presented information, nor can any rights be derived from it.

1E VERDIEPING, SCHAAL 1:50



Bwnrs. 27, 28, 31 en 32 (type C4)

Find a House does not accept any liability regarding the veracity of the presented information, nor can any rights be derived from it.



Find a House does not accept any liability regarding the veracity of the presented information, nor can any rights be derived from it.