



**Groenstraat
4702 VG Roosendaal**

€ 1.600 p.m. ex.

Price	€ 1.600 p.m. ex.
Decoration	Partly furnished
Status	Rented
Acceptance	Directly
House type	Single family, half detached house
Build type	Existing
Year of construction	1987
Maintenance inside	Good
Maintenance outside	Good
Location	Near quiet road, in residential area
Living surface	112m ²
Plot surface	137m ²
Livingroom surface	31m ²
Other surface	25m ²
Volume	450m ³
Rooms	5
Bedrooms	4
Bathrooms	1
Floors	3
Facilities	Roller shutter
Energy label	D
Garden	Backyard, frontyard
Backyard	South, 20m ² , 3.68×5.23cm
Garage type	Free standing, stone
Sizes	21.5m ²

Find a House does not accept any liability regarding the veracity of the presented information, nor can any rights be derived from it.

Located within walking distance of the city center and railway station, very nice, semi-detached house (approx. 112m²) with 3 bedrooms, garage and a front and back garden.

Layout

Ground floor

Access to the house through the front garden.

You enter a spacious hall where the toilet with hand basin is located. You will also find a new meter cupboard and a cellar cupboard here and you have access to the spacious living room.

The living room gives access through a door to the backyard which is located on the south.

The house has been expanded and the kitchen is located in the expansion, which is equipped with a refrigerator, microwave, dishwasher, 5-burner gas hob and extractor hood.

From the utility room you have access to the garage.

The garden is located on the south and fully tiled. Nice maintenance-free.

First floor

On the first floor are 3 bedrooms and the bathroom. The bathroom has a shower, hanging toilet and a washbasin.

Second floor

On the 2nd floor, which is accessible via a staircase, is the fourth bedroom. This room has a dormer window so there is a lot of light. The combi boiler is also located here.

Particularities

There will be a new PVC floor on the ground floor and laminate on the other floors.

Free parking in front of the door.

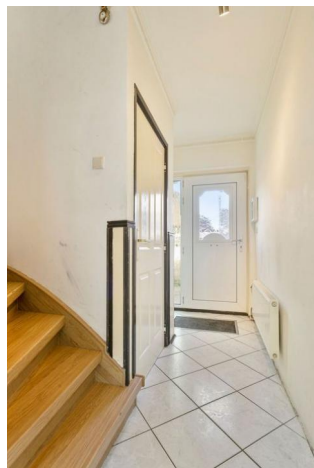
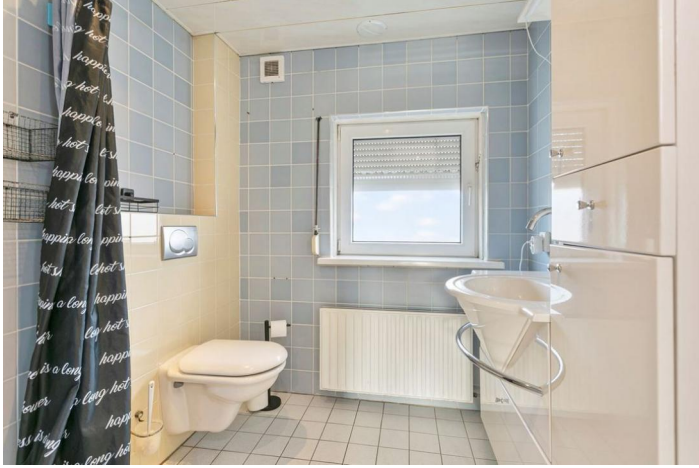
The rent is €1600,- excluding gas/water/electricity, internet & TV and municipal taxes.

Deposit is 1 month's rent.

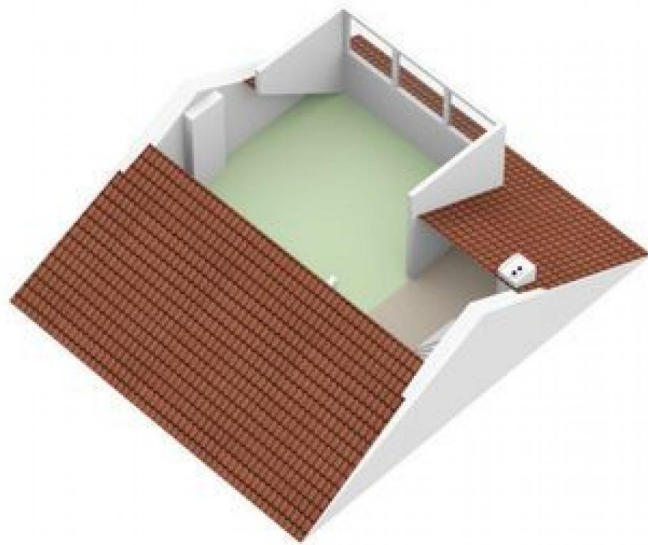
Extremely suitable for migrant workers. Maximum 4 people.



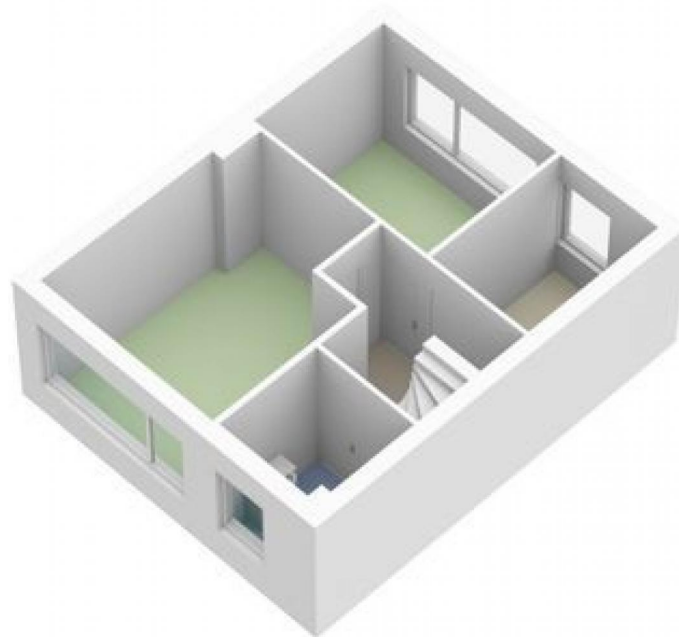




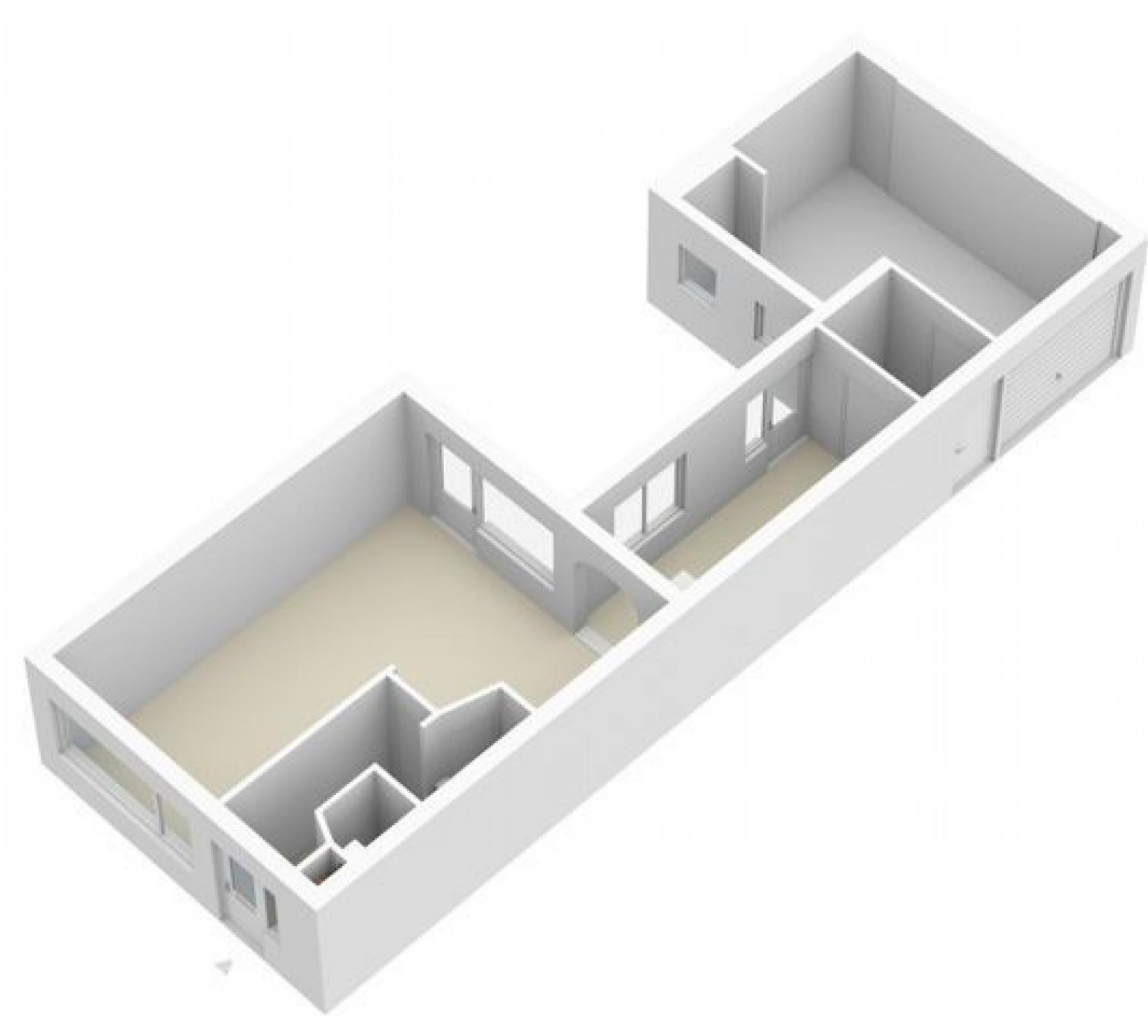




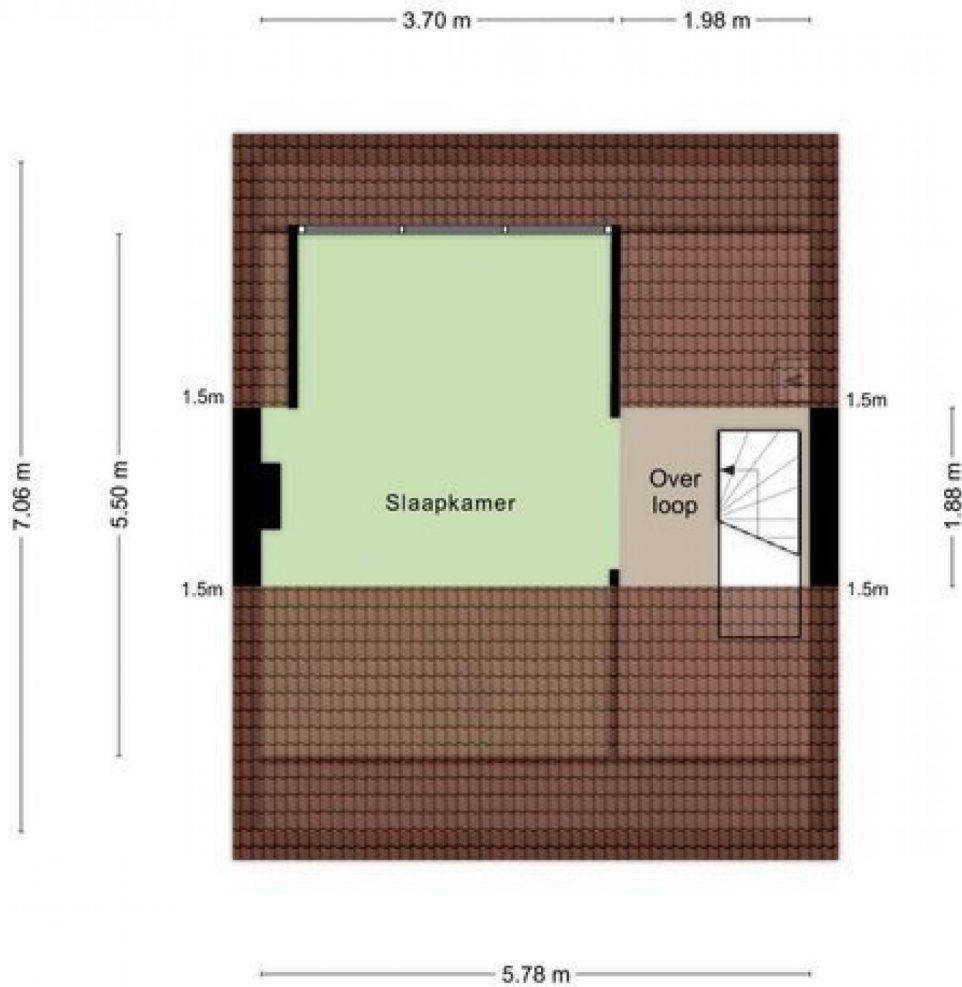
Find a House does not accept any liability regarding the veracity of the presented information, nor can any rights be derived from it.



Find a House does not accept any liability regarding the veracity of the presented information, nor can any rights be derived from it.



Find a House does not accept any liability regarding the veracity of the presented information, nor can any rights be derived from it.



Aan de plattegronden kunnen geen rechten worden ontleend
© Zibber www.zibber.nl

Find a House does not accept any liability regarding the veracity of the presented information, nor can any rights be derived from it.



Aan de plattegronden kunnen geen rechten worden ontleend
 © Zibber www.zibber.nl

Find a House does not accept any liability regarding the veracity of the presented information, nor can any rights be derived from it.



Find a House does not accept any liability regarding the veracity of the presented information, nor can any rights be derived from it.